



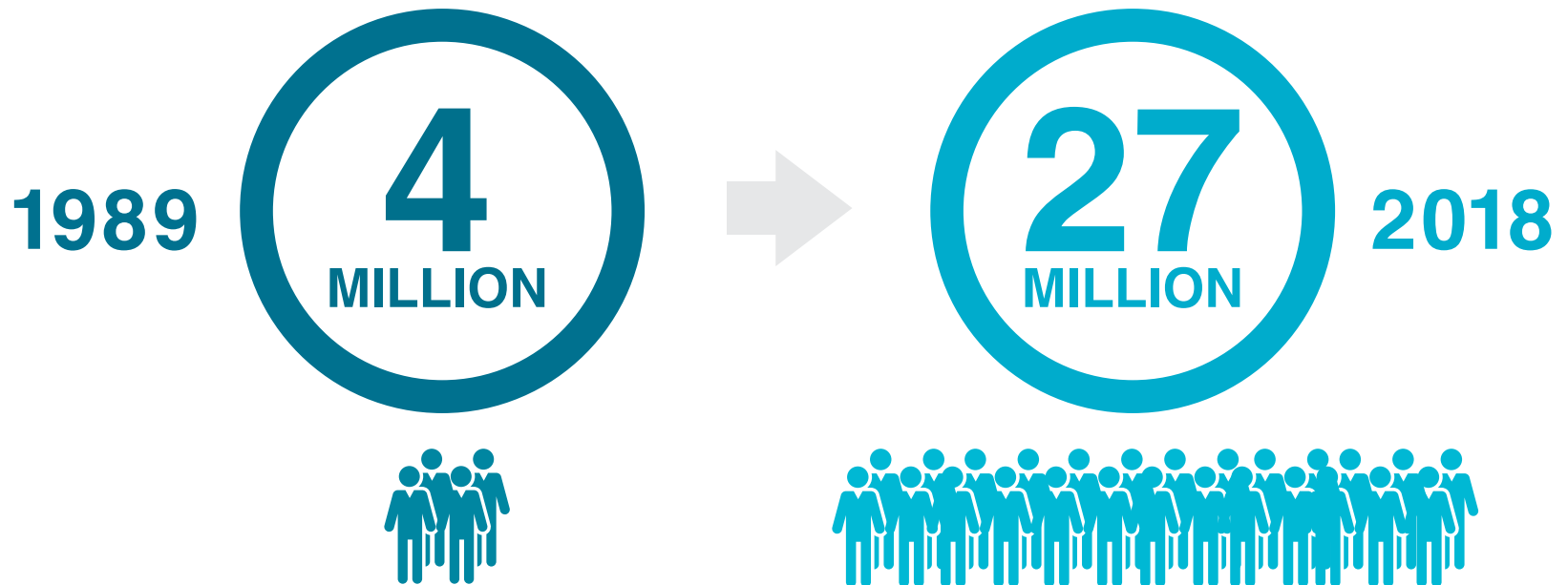
CRUISE TOURISM'S CONTRIBUTION TO THE NEW ZEALAND ECONOMY 2018

Kevin O'Sullivan | CEO
New Zealand Cruise Association
REPORT PREPARED BY M.E. CONSULTING.



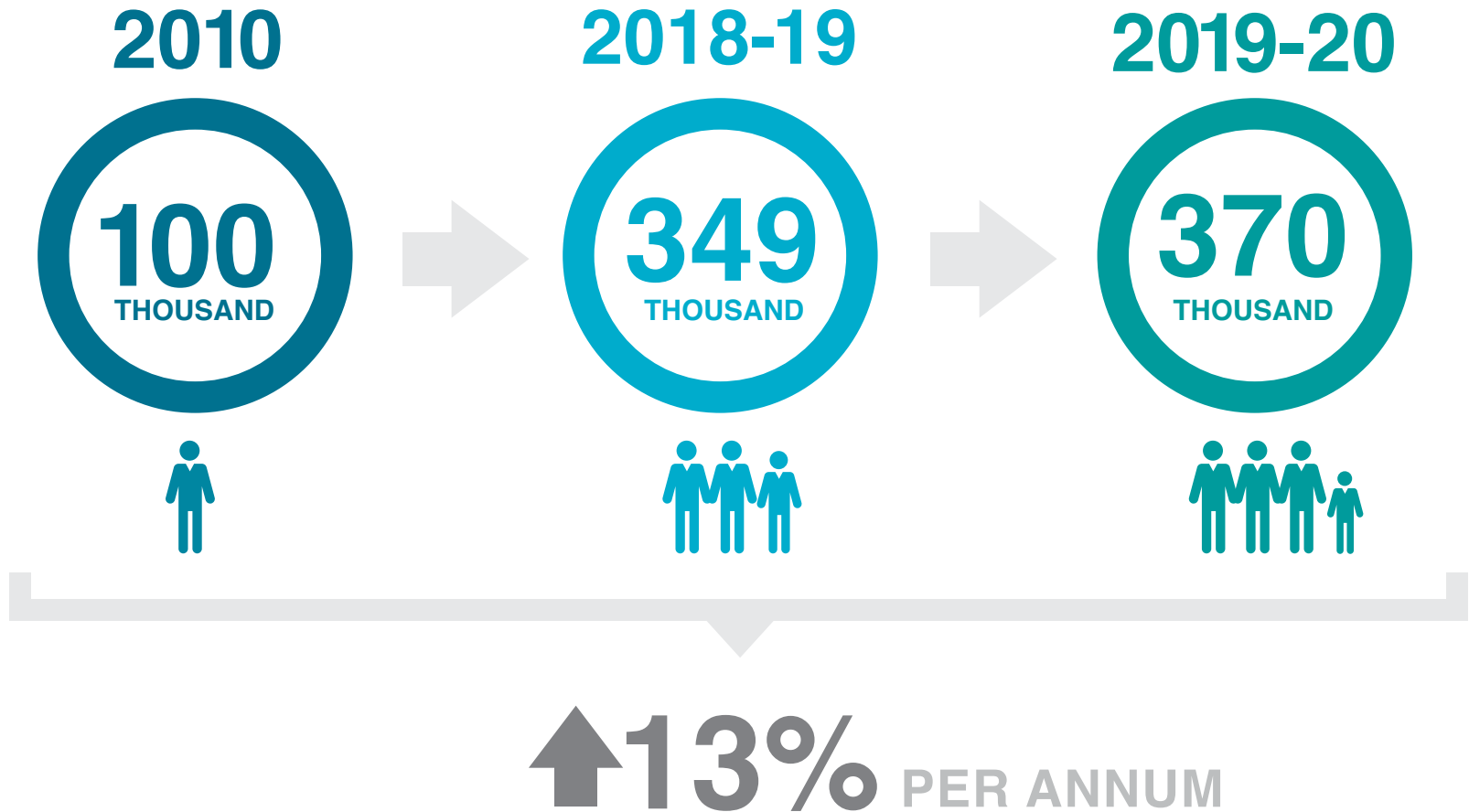
GLOBAL CRUISE TOURISM

CRUISE PASSENGERS



NATIONAL CRUISE TOURISM

CRUISE PASSENGERS



CRUISE TOURISM ACTIVITY

VESSELS



2017-18

36

VESSELS

148

VOYAGES

707

PORT DAYS

2018-19

41

VESSELS

199

VOYAGES

929

PORT DAYS

2019-20

44

VESSELS

203

VOYAGES

1028

PORT DAYS

CRUISE TOURISM ACTIVITY

PASSENGERS



UNIQUE PAX



EXCHANGE PAX



PAX PORT DAYS

2017-18

274,600

119,400

1,379,000

2018-19

348,900

170,000

1,933,000

2019-20

369,500

171,400

1,942,100

CRUISE TOURISM ACTIVITY

SOURCE MARKET 2017-18

24%

NORTH AMERICA

65,900

16%

NEW ZEALAND

44,700

42%

AUSTRALIA

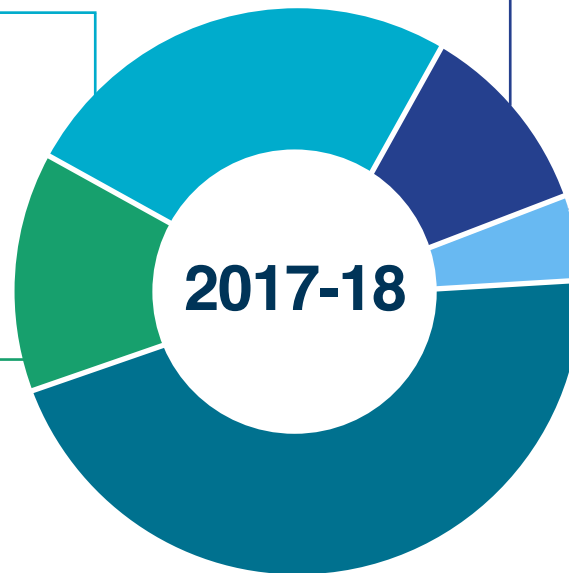
116,700

13%
EUROPE

34,500

5%
OTHER

13,400



CRUISE TOURISM ACTIVITY

CREW



CREW



EXCHANGE



PORT DAYS

2017-18

112,100

5,800

593,500

2018-19

161,900

8,400

841,900

2019-20

163,000

8,500

871,700

*INCLUDES TOTAL AMOUNT SPENT ON SHIP FUEL & INTERNATIONAL AIRFARES

CRUISE TOURISM EXPENDITURE

\$ MILLION

2017-18

\$106
Vessel

\$367

Passenger & Crew



2018-19

\$144
Vessel

\$532

Passenger & Crew



ECONOMIC CONTRIBUTION

CRUISE TOURISM

2017-18

491
\$ MILLION

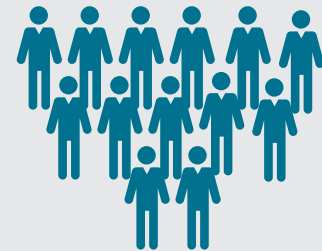
Employment
9100



2018-19

695
\$ MILLION

Employment
12800



REGIONAL CRUISE TOURISM

2017-18 PORT CALLS



**VESSEL
PORT DAYS**



VOYAGE PORT DAYS



ECONOMIC CONTRIBUTION

		PAX	CREW	EXPENDITURE \$M	VALUE ADDED	EMPLOYMENT
NORTHLAND	54	101,200	44,200	\$16	\$15	280
AUCKLAND	110	269,600	114,300	\$176	\$184	3,144
BAY OF PLENTY	81	149,600	65,700	\$74	\$53	1,257
GISBORNE	4	7,900	3,500	\$2	\$2	43
HAWKE'S BAY	58	101,000	44,100	\$27	\$24	508
TARANAKI	2	conf	conf	conf	conf	conf
WELLINGTON	80	161,400	68,600	\$50	\$67	965
NELSON-TASMAN	4	1,100	800	\$1	\$3	48
MARLBOROUGH	40	78,000	33,800	\$21	\$15	321
CANTERBURY	80	135,600	60,200	\$44	\$52	960
OTAGO	88	179,400	75,500	\$55	\$49	1,093
SOUTHLAND	106	193,900	82,700	\$8	\$8	181

REGIONAL CRUISE TOURISM

2018-19 BOOKINGS



VESSEL
PORT DAYS



VOYAGE PORT DAYS



ECONOMIC CONTRIBUTION

	VESSEL PORT DAYS	VOYAGE PORT DAYS		ECONOMIC CONTRIBUTION		
		PAX	CREW	EXPENDITURE \$M	VALUE ADDED	EMPLOYMENT
NORTHLAND	62	128,700	55,900	\$21	\$20	368
AUCKLAND	127	364,800	155,800	\$243	\$249	4,205
BAY OF PLENTY	113	235,900	101,700	\$113	\$82	1,948
GISBORNE	18	29,700	13,500	\$7	\$6	124
HAWKE'S BAY	73	130,900	57,300	\$34	\$31	664
TARANAKI	2	conf	conf	conf	conf	conf
WELLINGTON	109	223,400	97,100	\$72	\$95	1,373
NELSON-TASMAN	8	5,000	3,000	\$2	\$5	86
MARLBOROUGH	44	85,800	38,700	\$23	\$17	367
CANTERBURY	118	214,300	95,800	\$69	\$79	1,474
OTAGO	118	256,400	110,600	\$80	\$71	1,573
SOUTHLAND	137	275,100	111,700	\$11	\$11	252