



PORT OF  
AUCKLAND

TĀMAKI HERENGA WAKA

# NZ Cruise Conference

14<sup>th</sup> August 2025



# Cruise Strategy

## Growth

- Infrastructure for the future
- Bledisloe North berth development
- New purpose-built cruise terminal
- Channel deepening



## Regulatory

- Engagement with regulatory bodies
- In-port hull cleaning
- Border control
- Bio-security clearance



## Customer

- Improved passenger experience
- Pricing reviews
- Attractive options for winter cruising
- Customer centricity program



# Cruise Development



## NEW Bledisloe North Wharf

- Future Capacity – Vessel up to 350m LOA

## NEW Cruise Terminal

- New integrated cruise terminal at Bledisloe for pax turnarounds up to 5,000 passengers
- Elevated concourse for passenger transfers

## Upgrading Queens Wharf Terminal

- Capacity – Vessels up to 295m LOA

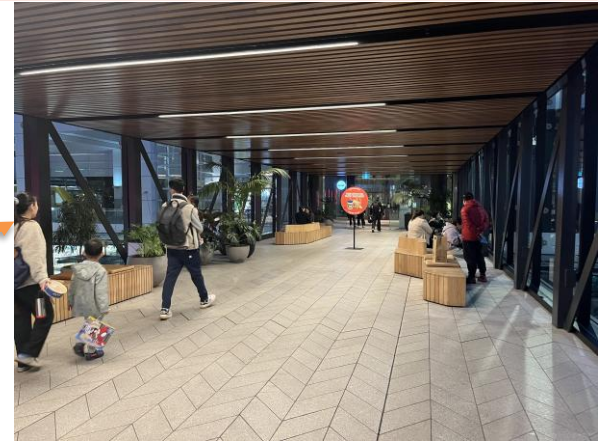
## Channel deepening

- To be done in 2 phases
- First phase deepens the channel to 14.2 metres



# Cruise Terminal

- Designed with the cruise industry
- Focused on passenger flow



# Construction timeline

---



**July 25**

Fast Track  
Consent granted



**August 25**

Construction of  
new wharf starts



**October 26**

Wharf and  
terminal  
completed



**March 27**

Elevated walkway  
completed

# In-Port Hull cleaning of niche areas

## Prototype in development

- In partnership with NZ Dive Squad and Herons
- Trial one – VERY successful
- Trial two – August 2025

## Regulatory Support

- Increasing engagement from regulatory bodies, MPI and Biosecurity NZ
- This process will be in operation for the upcoming cruise season





PORT OF  
**AUCKLAND**

TĀMAKI HERENGA WAKA

